



# Wolf Creek Online High School Newsletter



Welcome to the 2019-2020 school year! We are grateful to have you as part of the Wolf Creek family. As a small school, we strive to make positive connections and we work hard to help every student earn their diploma. We are happy that you call Wolf Creek your school! We are excited this year to present the new Moodle [Student Progress Portal](#). Moodle is our learning management system; it is where student work is submitted and stored. New this year to Wolf Creek is the Student Progress Portal, which will allow families to see accurate progress by accessing Moodle. This information can be seen from both parent and student accounts in Moodle.

Moodle will generate and email student progress reports most Fridays or you will receive an email from your Learning Manager. If you have not received a student progress email by 2:00 pm on Friday, please first check your spam folder for this email and next, contact your Learning Manager. As always, please contact your Learning Manager with any questions you may have.

As a Wolf Creek student, parent, or supporter we want you to have the information

## STAY UP TO DATE

### Listed below are ways to receive information from Wolf Creek:

- **Friday Moodle Student Progress Updates**—weekly updates on course completion rates, attendance, and other information.
- **Email**—Students have a school Gmail account they check for daily updates.
- **The Wolf Creek Website** ([triowolfcreek.com](http://triowolfcreek.com)) — Find our staff directory, school calendar, various updates throughout the year, and more.
- **Wolf Creek Weekly News**—Receive weekly email updates and announcements when you share your email with us. Sign up on our website or let your Learning Manager know.
- **Quarterly Mail**—End of term report cards and quarterly newsletters are sent out to keep families informed.
- **US Mail**—Other mailings are sent out as needed. Always inform the school of address updates throughout the year.
- **Facebook**—Like our Facebook page
- **Twitter**@wolfcreekonlinehs

*“Communication is KEY!”*



### Dates to Remember

*Mark it on your calendar!*

<b>Second Qtr:</b>	<b>Nov. 5 - Jan. 17</b>
<b>No School:</b>	<b>Nov. 27-29</b>
<b>Mid Term:</b>	<b>Dec. 6</b>
<b>No School:</b>	<b>Dec. 23 - Jan. 2</b>

### School Board Meetings

**November 12 @ 4:15**  
**December 10 @ 4:15**  
**January 14 @ 4:15**

### Staff Contact Information

**Tracy Quarnstrom:** 651-213-2017  
 Director/ 504 Coordinator/Tuency Officer  
[tquarnstrom@wolfcreekhs.org](mailto:tquarnstrom@wolfcreekhs.org)

**Brenda Swanson:** 651-213-2037  
 Dean of Students/Testing & Graduation  
[bswanson@wolfcreekhs.org](mailto:bswanson@wolfcreekhs.org)

**Martha Airhart:** 651-213-2054  
[mairhart@wolfcreekhs.org](mailto:mairhart@wolfcreekhs.org)

**Hanna Coleman:** 651-213-2034  
[hcoleman@wolfcreekhs.org](mailto:hcoleman@wolfcreekhs.org)

**Lindsay Coppernoll:** 651-213-2052  
[lcoppernoll@wolfcreekhs.org](mailto:lcoppernoll@wolfcreekhs.org)

**Hannah Edblad:** 651-213-2024  
[hedblad@wolfcreekhs.org](mailto:hedblad@wolfcreekhs.org)

**Sandra Flint:** 651-213-2067  
[sflint@wolfcreekhs.org](mailto:sflint@wolfcreekhs.org)

**Chloe Jackson:** 651-213-2035  
[cjackson@wolfcreekhs.org](mailto:cjackson@wolfcreekhs.org)

**Shelli Matheson:** 651-213-2055  
[smatheson@wolfcreekhs.org](mailto:smatheson@wolfcreekhs.org)

**Lindsay Miller:** 651-213-2032  
 Licensed Guidance Counselor  
[lmiller@wolfcreekhs.org](mailto:lmiller@wolfcreekhs.org)

**Becki Olseen:** 651-213-2033  
[bolseen@wolfcreekhs.org](mailto:bolseen@wolfcreekhs.org)

**Meagan Rathbun:** 615-213-2046  
[mrathbun@wolfcreekhs.org](mailto:mrathbun@wolfcreekhs.org)

**Chris Wallin:** 651-213-2036  
[cwallin@wolfcreekhs.org](mailto:cwallin@wolfcreekhs.org)

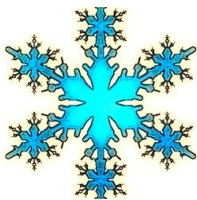
Staying informed will help you be successful in an online setting!

## Manufacturing and Healthcare Field Trip



On October 3, a group of Wolf Creek students attended the second annual manufacturing event in Wyoming hosted by Chisago County. Students had the opportunity to tour local manufacturing businesses in Wyoming and attended a career fair at Split Rocks. Contact Licensed School Counselor, Lindsay Miller for college and career resources at 651-213-2032 or [lmiller@wolfcreekhs.org](mailto:lmiller@wolfcreekhs.org).

## Weather Related School Closings

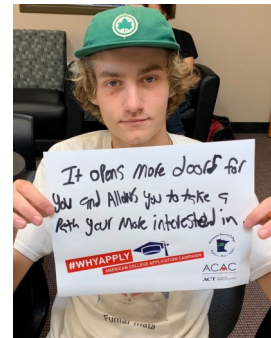
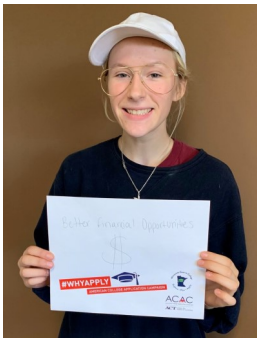


If the weather is forcing schools to close, there will be notifications on **Channels 4, 5, 9 and 11**. If you don't catch one of these television stations, you may also call the front office at 651-213-2095. In the event we have to close school, a message will be left at that number and an email will be sent out to families as quickly as possible. The important thing during a winter storm is safety. Remember, for your safety please dress appropriately for the inclement weather.



## "Why Apply" Campaign

Wolf Creek joined Minnesota Goes to College and the American College Application Campaign in highlighting the importance of applying to a postsecondary institution. Whether it is a technical program, certificate, two-year, or four-year degree, these postsecondary programs matter and have a huge impact on the lives of students. For this initiative, we asked our Wolf Creek students, "Why is it important to apply to a college or postsecondary program?" We received a variety of reasons why higher education is important. Check out some of their answers! **#WhyApply**



## All Men Must Register for the Selective Service. It's the Law.

Men are required by law to register with the Selective Service within 30 days of their 18th birthday but can preregister at 17 years and 3 months of age.

**Register at [SSS.gov](http://SSS.gov)—it only takes 45 seconds to complete!**

Failure to register by the age of 26 results in a lifetime of consequences that include:

- ◆ Unable to receive federally funded college loans and grants
- ◆ Unable to get into federally funded training and certification programs
- ◆ Barred from all federal employment
- ◆ Ineligible for state and local government jobs





## WHO YOU GONNA CALL?

**For Attendance:** 651-213-2095  
**Testing Coordinator:** Brenda Swanson @ 651-213-2037  
**Transcripts and credits:** Brenda Swanson @ 651-213-2037  
**Truancy Coordinator:** Tracy Quarnstrom @ 651-213-2017  
**Homeless Liaison:** Tracy Quarnstrom @ 651-213-2017  
**504 Assistant:** Martha Airhart @ 651-213-2054



### Open Positions for Wolf Creek School Board

This could be what just what you're looking for! Wolf Creek currently has an open position for two "Parent Representatives" to join the School Board. The school board meets once per month on a Tuesday at 4:15 p.m. Attendance at meetings and reading of the board information prior to the meeting is required of this position. A small monthly stipend is available for attending meetings and serving in this position.

If you have questions or want to find out if you are eligible for the position, contact Tracy at [tquarnstrom@wolfcreekhs.org](mailto:tquarnstrom@wolfcreekhs.org) or by calling her at 651-213-2017.

## Meet our Mental Health/Guidance Counselors

**Lindsay Miller** is Wolf Creek's part-time licensed school counselor. She has a Bachelor of Arts in Psychology and a Master of Arts in School Counseling. Her role at Wolf Creek is to support students academically, socially, and emotionally, as well as post-secondary planning. She lives in Stacy with her husband and two children. In her spare time she enjoys yoga, biking, organizing, and spending time with her family. Lindsay's campus hours are Tuesday and Thursday from 9:30—3:00. If you have any questions please contact her at 651-213-2032 or [lmiller@wolfcreekhs.org](mailto:lmiller@wolfcreekhs.org).

**Tasha Barnes** is a licensed marriage and family therapist who provides mental health counseling to students at Wolf Creek. Tasha also maintains a caseload with Family Based Therapy Associates, where she sees individuals, couples and families who have a wide range of presenting concerns. Tasha believes in helping students with their academic success by addressing mental health concerns in a supportive environment. Contact Tasha Barnes at 651-213-2095 or [nbarnes@fbtacounseling.com](mailto:nbarnes@fbtacounseling.com).

**Tracie Houle**, MA, LADA, LPCC, provides mental health counseling and support with students at Wolf Creek and their families through Therapeutic Services Agency, Inc (TSA). Tracie has a background in Addiction Counseling. Tracie meets individual needs, identifies goals for therapy, utilizes a variety of therapy techniques, and creates a safe and healing environment. Tracie is on campus Tuesdays from 7:30 am—12:00 pm. Contact Traci Houle at 320-322-9709 or [thoule@tsapc.net](mailto:thoule@tsapc.net).



## Vaping Awareness....Did You Know???

According to the 2019 Minnesota Student Survey:

- ◆ 25% of 11th graders admit they currently use (vape) e-cigarettes
- ◆ 16% of 9th graders admit they currently us (vape) e-cigarettes
- ◆ 11% of 8th graders admit they currently use (vape) e-cigarettes
- ◆ 33% of those admitting that they use e-cigarettes, admit that they are vaping THC (active chemical found in marijuana)
- ◆ 75% of the 11th graders that admitted to using e-cigarettes also admitted they don't feel vaping is dangerous

The Minnesota Department of Health has a "Toolkit" with resources for parents regarding the dangers of vaping.  
<https://www.health.state.mn.us/communities/tobacco/ecigarettes/parents.html>



## CONGRATULATIONS to our STUDENTS of the MONTH

SEPTEMBER

**Edwin Vazquez and Amber Romleski**



**Edwin** is a senior who has attended Wolf Creek since 9th grade. Edwin is motivated this year to stay on track and has shown consistent effort in all of his courses. He balances working full-time with a full schedule of core courses. Edwin is very respectful and communicates with his Learning Manager each week. We are impressed by his maturity and positive attitude!

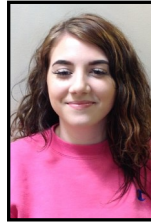


**Amber** is a senior who is taking extra classes to catch up after being dealt a tough hand to start her high school career. Amber has been persistent in completing work and has turned things around over the past four years and we are super proud of her accomplishments!



OCTOBER

**Kayla Misenor and Alyssa Dickinson**



**Kayla** is in her second year at Wolf Creek. She enrolled with us behind in credits, but after working hard last year with an overage of credits this term, she will graduate on time! Kayla is great about communicating with her Learning Manager and putting in the time necessary to do well in her classes. Kayla is a great example of being a successful Wolf Creek student that works 100% from home.



**Alyssa** is a senior who started at Wolf Creek her junior year. Alyssa is a dedicated student who submits excellent work. Alyssa reaches out for help and communicates well with her Learning Manager. Alyssa is investigating colleges for either psychology or marketing. We are proud of you and wish you well in your college search!

## October was College Knowledge Month

Wolf Creek is excited and proud to be a registered College Knowledge Month site again this year! Wolf Creek participates in the statewide effort by providing information to students and families on participating Minnesota Colleges, as well as encouraging a culture of college and career readiness throughout the year by planning college visits and presentations on application, scholarship, and FAFSA information.

For more information on upcoming college and career readiness events at Wolf Creek, please visit our site at [www.triowolfcreek.com/current-students/twc-news](http://www.triowolfcreek.com/current-students/twc-news).



## PSEO—Postsecondary Enrollment Options

PSEO is a program that allows high performing, college ready students in grades 10-12 to earn both high school and college credit while still in high school, through enrollment in and successful completion of college-level, nonsectarian courses at eligible participating postsecondary institutions. Most PSEO courses are offered on the campus of the college; some courses are offered online. Each college or university sets its own requirements for enrollment into the PSEO courses. Seniors and Juniors can take PSEO courses on a full or part-time basis; 10th graders may take one career/technical PSEO course. There is no charge for tuition, books or fees for items that are required. There are eligibility requirements to

meet and funds are available to help pay for transportation for qualifying students. Students must notify their schools by May 30th if they want to participate in fall for PSEO. Spring PSEO deadline is usually December 1st. For current information about the PSEO program, please visit the Minnesota Department of Education's PSEO webpage at [www.education.state.mn.us](http://www.education.state.mn.us) under 'Student Success' and then 'College Ready'.

Students will also need to meet with the Dean of Students for paperwork and course approval. Wolf Creek guidelines can be found at [triowolfcreek.com](http://triowolfcreek.com) and search "PSEO".