

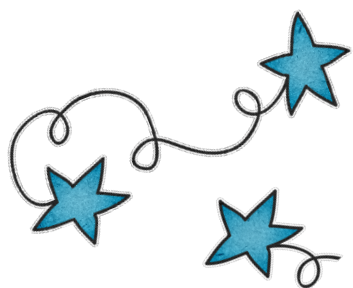
Wolf Creek News – July 2018

www.triowolfcreek.com

Office: 651-213-2095 - Fax: 651-257-0576

Mailing Address: 13750 Lake Boulevard, Lindstrom, MN 55045

Campus Address: 10363 Liberty Lane, Chisago City, MN



IGP's and Fall Enrollment

Students should watch their emails in late August, or expect a call from your Learning Manager, to schedule your IGP (Individual Graduation Plan) meeting.

Staff will be holding IGP meetings August 28, 29 and 30. Please reserve a time on one of these days as these meetings are important.

Please complete the enclosed Educational Benefits Form and bring to your IGP date.

Questions? Contact your Learning Manager!

Activities and Athletics

Wolf Creek requires students to notify the Director of their intent to participate at least 60 days before the first practice. Students pay \$50 to TWC for registration with the MSHSL. Other school athletic fees for eligibility will apply as well.

In order for any charter school student to participate in MSHSL Activities a cooperative agreement must be signed between the charter school of attendance and the school where the student wishes to participate in activities. It is the sole responsibility of the student to initiate this cooperative agreement. Wolf Creek is willing to enter into cooperative agreements but the other school entity must also be willing to enter into such an agreement. Students must also meet academic eligibility requirements.

Any questions, or to sign, contact the MSHSL Coordinator, Chris Wallin at cwallin@wolfcreekhs.org.

Join Our Mailing List!

Do you receive the weekly TWC news? If not, please visit our website and join our mailing list today. Start getting updates on the happenings at Wolf Creek.

Go to:

www.triowolfcreek.com

Sign up for weekly updates!

First Day of School – September 4

Students can work from home on Sept. 4 unless they have an appointment scheduled on campus with their Learning Manager.

Connect with your Learning Manager to set up your Quarter 1 classes and schedule your IGP meeting now.

We hope you all enjoy the rest of your summer and we look forward to seeing you in the fall.



Contact Info for Wolf Creek Staff

Martha Airhart: 651-213-2054
mairhart@wolfcreekhs.org

Hanna Coleman: 651-213-2034
hcoleman@wolfcreekhs.org

Sandy Flint: 651-213-2067
sflint@wolfcreekhs.org

Lindsay Coppernoll: 651-213-2052
lcoppernoll@wolfcreekhs.org

Shelli Matheson: 651-213-2055
smatheson@wolfcreekhs.org

Danielle Flanagan: 651-213-2060
dflanagan@wolfcreekhs.org

Becki Olseen: 651-213-2033
bolseen@wolfcreekhs.org

Meagan Rathbun: 651-213-2046
mrathbun@wolfcreekhs.org

Hannah Edblad: 651-213-2024
hedblad@wolfcreekhs.org

Christopher Wallin: 651-213-2036
cwallin@wolfcreekhs.org

Chloe Jackson: 651-213-2035
cjackson@wolfcreekhs.org

Brenda Swanson: 651-213-2037
Dean of Students
bswanson@wolfcreekhs.org

Tracy Quarnstrom: 651-213-2017
Director
tquarnstrom@wolfcreekhs.org

Do You Want Your Work Back?

Any Wolf Creek students who wishes to have work returned to them must request this work within 14 days, by 7/31/18, or the work will be disposed of.

School Hours:

Please be aware of campus hours from 7:30 a.m. to 2:00 p.m. on Tuesdays and Thursdays. All students should be picked up by 2:00 p.m. so staff can participate in staff development.

Thank you.

