



WOLF CREEK ONLINE HIGH SCHOOL NEWSLETTER

www.triowolfcreek.com



Greetings!

It has been a great start to the year! We have had many changes over the summer at Wolf Creek. Our largest change has been moving to a new learning management system called Schoology. We believe that this change will allow us to create robust curriculum options for all students and advanced progress monitoring. As with all changes, we may feel some hiccups along with the transition process. If you have issues accessing Schoology and progress for your students please let us know. It is our goal to provide a consistent and easy-to-use parent notification system. We welcome any feedback on Schoology and our communication processes.

Supports:

If you need any support or warm items as the weather gets cold, please contact me at tquarnstrom@wolfcreekhs.org.

Wolf Creek does have some items such as hats, mittens, and warm weather clothing. We can also reach out to local service agencies such as the Lions or Rotary if there are other needs we cannot meet. We know students who have their needs met are more likely to succeed academically and we are fully prepared to support families in any way possible.

We wish you a productive and safe start to the year and Happy Fall!

Sincerely,
Tracy Quarnstrom
Director

Staff Contact Information

Tracy Quarnstrom: 651-213-2017
Director/504 Coordinator/Tuancy Officer
tquarnstrom@wolfcreekhs.org

Brenda Swanson: 651-213-2037
Dean of Students/Testing & Graduation
bswanson@wolfcreekhs.org

Renee Anick: 651-213-2046
Social Studies Learning Manager
ranick@wolfcreekhs.org

Lindsay Coppernoll: 651-213-2052
Science Learning Manager
lcoppernoll@wolfcreekhs.org

Hannah Edblad: 651-213-2024
Special Education Learning Manager
hedblad@wolfcreekhs.org

Sandy Flint: 651-213-2067
Mathematics Learning Manager
sflint@wolfcreekhs.org

Chad "C.J." Hanson: 651-213-2034
Music Learning Manager
chanson@wolfcreekhs.org

Chloe Jackson: 651-213-2035
Language Arts Learning Manager
cjackson@wolfcreekhs.org

Bri Karnes: 651-213-2054
Special Education Learning Manager
bkarnes@wolfcreekhs.org

Jolene Lauderbaugh: 651-213-2095
Educational Assistant
jlauderbaugh@wolfcreekhs.org

Shelli Matheson: 651-213-2055
Mathematics Learning Manager
smatheson@wolfcreekhs.org

Lori Nelson: 651-213-2032
Language Arts Learning Manager
lnelson@wolfcreekhs.org

Becki Olseen: 651-213-2033
Social Studies Learning Manager
bolseen@wolfcreekhs.org

Chris Wallin: 651-213-2036
Health/PE Learning Manager
cwallin@wolfcreekhs.org

DATES TO REMEMBER

Term 2: Nov. 8 - Jan. 20
No School: Nov. 23 - 25
Mid Term: Dec. 15
No School: Dec. 23 - Jan. 2

SCHOOL BOARD MEETINGS

November 8th 4:15 pm
December 13th 4:15 pm
January 10th 4:15 pm

WEATHER RELATED SCHOOL CLOSINGS

If the weather forces campus to close, there will be notifications on Channels 4, 5, 9, and 11. You may also call the main campus number 651-213-2095. In the event we have to close campus, a message will be left at that number and a notice will be sent out to families as quickly as possible. We are fortunate to have our curriculum available 24/7 online. Safety is the most important thing during a winter storm. Remember, for your safety please dress appropriately for the inclement weather.



Join our Wolf Creek Council

Wolf Creek Council is made up of students and a few staff members who work together to strengthen our school community. Council members typically meet once a month either on campus or virtually to plan activities and events.

All students are welcome to join!

If you are interested in joining us please reach out to your Learning Manager.



Join our Equity Working Group

Wolf Creek has formed an equity working group and is always looking for more stakeholders to participate in these important conversations.

If you are interested in joining us please contact Tracy Quarnstrom at tquarnstrom@wolfcreekhs.org.

Important Mental Health Resources

Many mental health counselors are offering both in person and telehealth appointments.

Lakes Center for Youth and Families
651-464-3685

Family Based Therapy Associates
651-257-2733

Canvas Health
651-777-5222

Bridges and Pathways
651-982-4792

MEET OUR COUNSELOR



Tasha Barnes

Tasha Barnes is a licensed marriage and family therapist who provides mental health counseling to students at Wolf Creek. Tasha also maintains a caseload with Family Based Therapy Associates in Chisago City, where she sees individuals, couples, and families who have a wide range of presenting concerns. Tasha believes in helping students with their academic success by addressing mental health concerns in a supportive environment.

Tasha is available on campus various hours Tuesdays and Thursdays and is also available via Telehealth. Contact our front desk at 651-213-2095 or reach out to your Learning Manager to schedule time with Tasha. You may also contact Tasha Barnes at 651-257-2733 x 23 or nbarnes@fbtacounseling.com.



COZY UP WITH THE WOLF CREEK COUNCIL!



Join us on campus:

November, 15th

Learn more about the Wolf Creek Council, what we do, and how you can get involved!

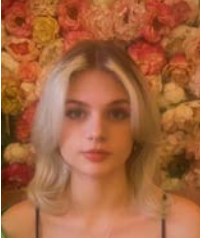
Wear your favorite flannel shirt, and come enjoy a cup of cocoa and a cookie on us!

CONGRATULATIONS TO OUR STUDENTS OF THE MONTH

September



Ava O'Connell is a very conscientious student who is off to an amazing start this year. She started with us at the beginning of her Junior year. As a senior, Ava is working hard to graduate this year. Ava has excellent communication skills and reaches out to her teachers for help both on campus and virtually to be sure she understands her coursework. Ava has volunteered with the Franconia Sculpture Park and worked part-time for them this summer. Congratulations, Ava!



Maiya Blevins is a 12th-grade student who started here at Wolf Creek in 11th grade. So far this school year, she has been an absolute rockstar. She is on track in all of her classes and communicates consistently with her Learning Manager. Maiya is a respectful student that puts forth her full and best effort. We are proud of you, Maiya!



October



Ava works 100% from home and does a great job of staying on track each week, communicating with her Learning Manager when she needs help and is getting awesome grades! In term one, Ava finished all of her classes two weeks early! Keep up the great work, Ava!



Alex is an 11th-grade student here at Wolf Creek. Overall, Alex is an awesome student. Not only does Alex keep up with the coursework in each of his classes, but he also reaches out to his teacher(s) when he needs help or when he needs clarification on an assignment. Alex is a respectful and kind student who always puts forth his full and best effort. He strives to do well in his classes each term. We are proud of your accomplishments, Alex!

STAY UP TO DATE

As a Wolf Creek student, parent, or supporter we want you to have the information you need. Remember that the key to success is communication. Contact your Learning Manager today if you need assistance with classes, motivation, or anything else. Listed below are ways to receive information from Wolf Creek:

- **Friday Student Progress Updates** - Weekly updates via email on course completion rates, attendance, and other information.
- **Email** - Students have a school Gmail account they need to check daily for updates.
- **The Wolf Creek Website** (www.triowolfcreek.com) - Find our staff directory, school calendar, various updates throughout the year, and more.
- **Wolf Creek Weekly News** - Receive weekly email updates and announcements every Monday when you share your email with us. Sign up on our website or reach out to your Learning Manager.
- **Quarterly Mail** - End of term report cards and quarterly newsletters are sent out to keep families informed.
- **Facebook** - Like our Facebook page (www.facebook.com/WolfCreekOnlineHighSchool).
- **Instagram** - www.instagram.com/wolfcreekhs/



OCTOBER WAS COLLEGE KNOWLEDGE MONTH

Wolf Creek enjoys celebrating this on campus and across our social media platforms each year to help our students start thinking about post secondary options. We provide information to students and families all month and encourage a culture of college and career readiness throughout the year by providing resources to help with college applications, scholarships, and FAFSA information.

Watch our Weekly Newsletters for more information on upcoming college and career readiness resources available to Wolf Creek students and families!

PSEO: POST-SECONDARY ENROLLMENT OPTIONS

PSEO is a program that allows high performing, college ready students in grades 10-12 to earn both high school and college credit while still in high school, through enrollment in and successful completion of college-level courses at eligible participating postsecondary institutions. PSEO courses are offered both online and on the campus of the college. Seniors and Juniors can take PSEO courses on a full or part-time basis; Sophomores can take one career/technical PSEO course. There is no charge for tuition, books, or fees for required items. There are eligibility and deadline requirements to meet. Students must notify their school by May 30th if they want to participate in fall and by December 1st if they want to participate in spring. Contact your Learning Manager or the Dean of Students, Brenda Swanson at bswanson@wolfcreekhs.org if you are interested in PSEO.

WHO DO YOU CALL?



*Enrollment,
Testing Coordinator,
Transcripts and Credits:*

*Brenda Swanson
651-213-2037
bswanson@wolfcreekhs.org*

*Attendance:
651-213-2095*

*Truancy Coordinator,
Homeless Liaison,
504 Assistant,
Transportation Coordinator:*

*Tracy Quarnstrom
651-213-2017
tquarnstrom@wolfcreekhs.org*

PARENT REPRESENTATIVE NEEDED FOR WOLF CREEK SCHOOL BOARD

Gain insight on things happening at Wolf Creek. Share ideas and help our school board make important decisions that will impact your child's education!



Wolf Creek is looking for one parent representative to serve on our school board. Parent representatives are an integral part of our school board community.

- Meetings occur once per month, typically the second Tuesday of the month at 4:15 pm
- Responsibilities include reading board materials prior to the meeting and monthly meeting engagement
- A stipend is given for attendance at meetings.

If you or someone you know is interested in this position, please email Tracy Quarnstrom at tquarnstrom@wolfcreekhs.org.